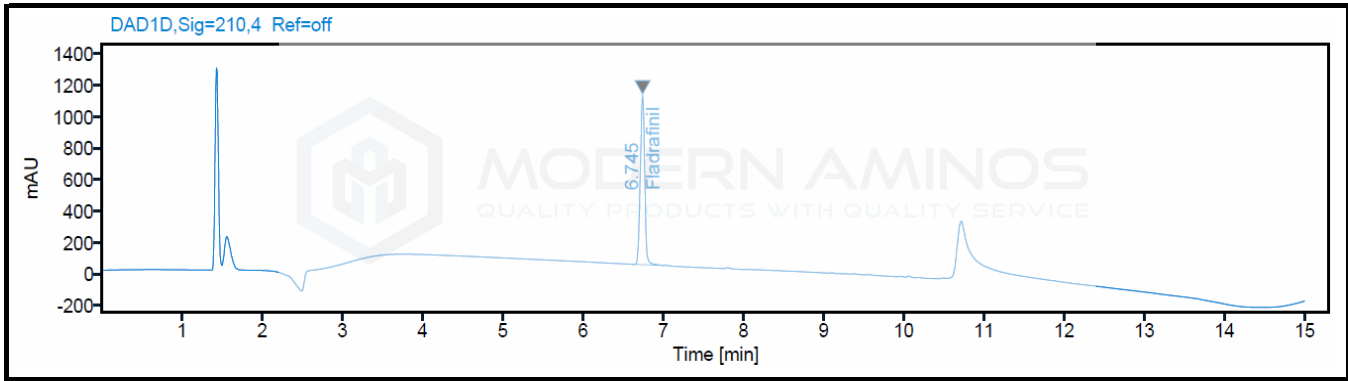


Certificate of Analysis

Fladrafinil 50 mg/mL

Report To:
Modern Aminos LLC
9169 W State St #1451
Garden City, ID 83714-1733

Compound: Fladrafinil
Quantity: 50 mg/mL
Laboratory ID: V260513-21 001
Lot Number: BX-L-N9N2
Date Reported: 5/27/2026



Analysis	Method	Results (per mL)
Quantity	HPLC-UV/VIS	50.12 mg




Report By: Dustin Newman, Laboratory Director on 5/27/2026



Approved By: Tori Johnson, Operations Manager on 5/27/2026

ND: Not Detected



Please consult A2LA Certificate #6377.01.01 for a list of accredited tests. Samples were received in acceptable condition. The result(s) in this report relate only to the portion of the sample(s) tested. All analyses were performed consistent with the Vanguard Laboratory Quality Management System. Vanguard Laboratory and its staff did not observe or participate in the sample selection process, and cannot confirm the authenticity of the sample or its representativeness of the associated lot/batch.



Vanguard Laboratory
2635 Parkmont Ln
Olympia, Wa 98502
360-967-7010



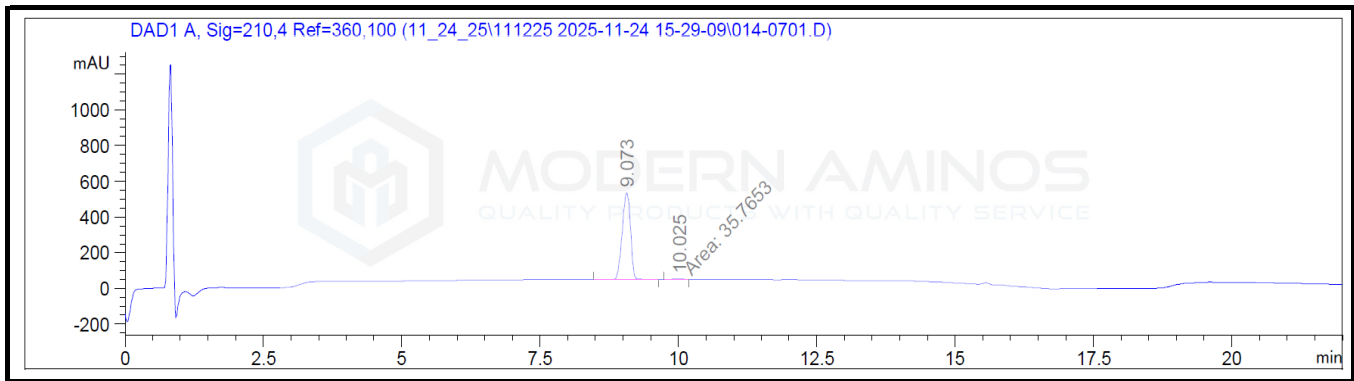
MODERN AMINOS
QUALITY PRODUCTS WITH QUALITY SERVICE

Certificate of Analysis

Fladrafinil Raw Powder

Report To:
Modern Aminos LLC
9169 W State St #1451
Garden City, ID 83714-1733

Compound: Fladrafinil
Matrix: Raw Powder
Laboratory ID: V251119-4 002
Lot Number: FL2511A
Date Reported: 11/28/2025



Analysis	Method	Results
Chromatographic Purity	HPLC-UV/VIS	99.30% ± 0.18%




Report By: Dustin Newman, Laboratory Director on 11/28/2025



Approved By: Tori Johnson, Operations Manager on 11/28/2025



Please consult A2LA Certificate #6377.01.01 for a list of accredited tests. Samples were received in acceptable condition. The result(s) in this report relate only to the portion of the sample(s) tested. All analyses were performed consistent with the Vanguard Laboratory Quality Management System. Vanguard Laboratory and its staff did not observe or participate in the sample selection process, and cannot confirm the authenticity of the sample or its representativeness of the associated lot/batch.