

# Certificate of Analysis

SLU-PP-332 500 mcg/unit

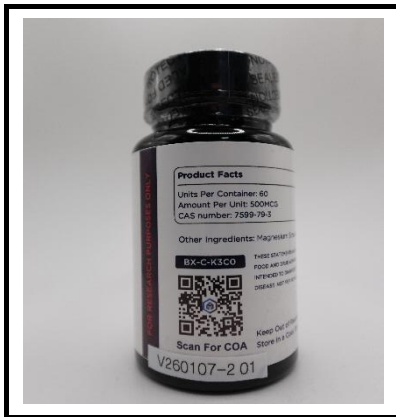
Report To:  
Modern Aminos LLC  
9169 W State St #1451  
Garden City, ID 83714-1733

Compound: SLU-PP-332  
Quantity: 500 mcg/unit  
Laboratory ID: V260107-2 001  
Lot Number: BX-C-K3C0  
Date Reported: 1/20/2026



Note: Chromatogram for sample "A" shown here

Analysis	Method	Results (per Unit)		
Chromatographic Purity	HPLC-UV/VIS	533 mcg	473 mcg	505 mcg




Report By: Dustin Newman, Laboratory Director on 1/20/2026



Approved By: Tori Johnson, Operations Manager on 1/20/2026



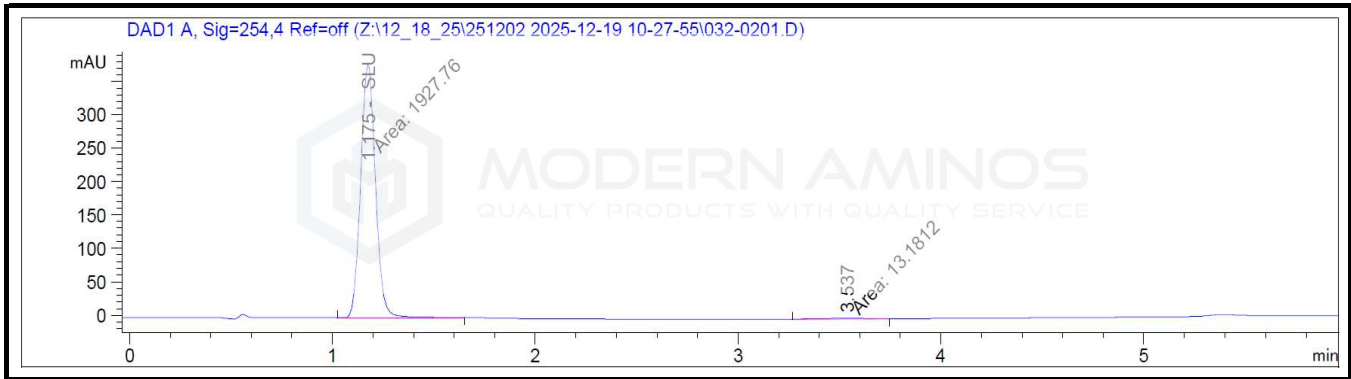
Please consult A2LA Certificate #6377.01.01 for a list of accredited tests. Samples were received in acceptable condition. The result(s) in this report relate only to the portion of the sample(s) tested. All analyses were performed consistent with the Vanguard Laboratory Quality Management System. Vanguard Laboratory and its staff did not observe or participate in the sample selection process, and cannot confirm the authenticity of the sample or its representativeness of the associated lot/batch.

# Certificate of Analysis

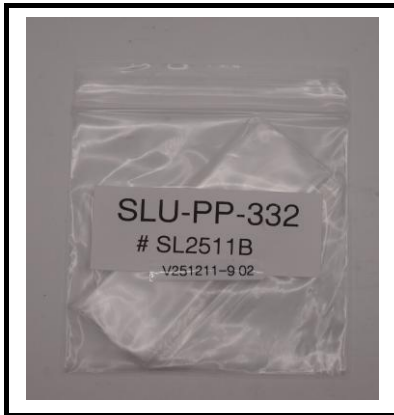
SLU-PP-332 Raw Powder

Report To:  
Modern Aminos LLC  
9169 W State St #1451  
Garden City, ID 83714-1733

Compound: SLU-PP-332  
Matrix: Raw Powder  
Laboratory ID: V251211-9 002  
Lot Number: SL2511B  
Date Reported: 12/23/2025



Analysis	Method	Results
Chromatographic Purity	HPLC-UV/VIS	99.32% ± 0.18%




Report By: Dustin Newman, Laboratory Director on 12/23/2025



Approved By: Tori Johnson, Operations Manager on 12/23/2025



Please consult A2LA Certificate #6377.01.01 for a list of accredited tests. Samples were received in acceptable condition. The result(s) in this report relate only to the portion of the sample(s) tested. All analyses were performed consistent with the Vanguard Laboratory Quality Management System. Vanguard Laboratory and its staff did not observe or participate in the sample selection process, and cannot confirm the authenticity of the sample or its representativeness of the associated lot/batch.