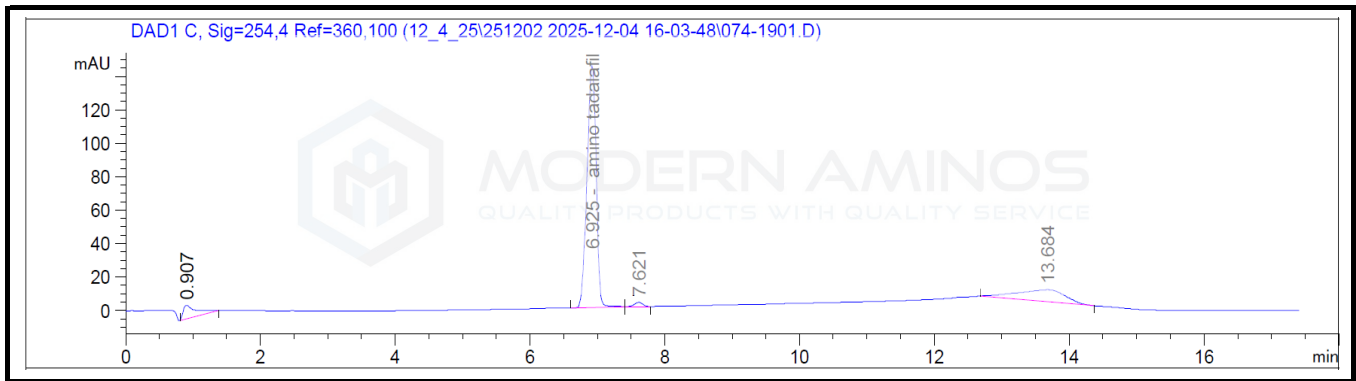


# Certificate of Analysis

Aminotadalafil 20 mg/mL

Report To:  
Modern Aminos LLC  
9169 W State St #1451  
Garden City, ID 83714-1733

Compound: Aminotadalafil  
Quantity: 20 mg/mL  
Laboratory ID: V251203-12 001  
Date Reported: 12/9/2025  
Batch ID: BX-L-Q7K1



Analysis	Method	Results
Quantity	HPLC-UV/VIS	19.49 mg/mL




Report By: Dustin Newman, Laboratory Director on 12/9/2025



Approved By: Tori Johnson, Operations Manager on 12/9/2025



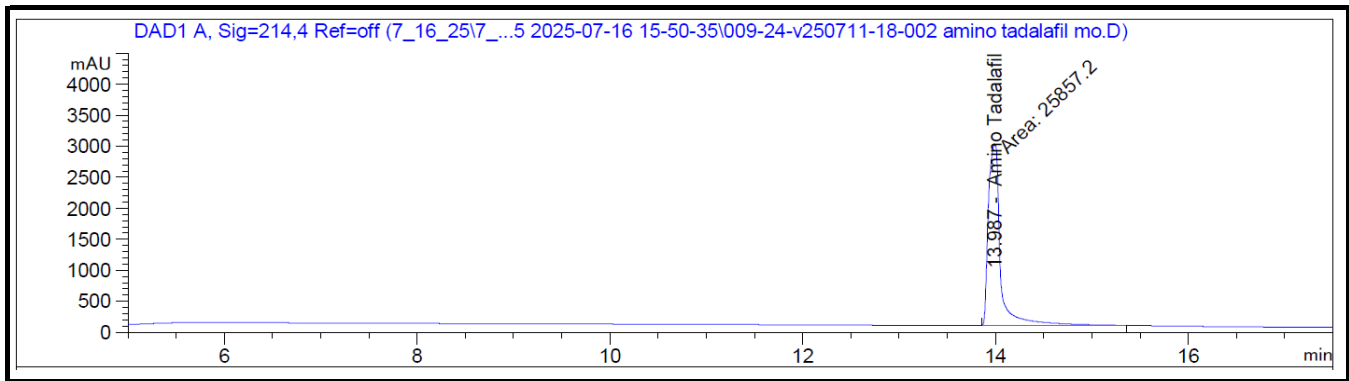
Please consult A2LA Certificate #6377.01.01 for a list of accredited tests. Samples were received in acceptable condition. The result(s) in this report relate only to the portion of the sample(s) tested. All analyses were performed consistent with the Vanguard Laboratory Quality Management System. Vanguard Laboratory and its staff did not observe or participate in the sample selection process, and cannot confirm the authenticity of the sample or its representativeness of the associated lot/batch.

# Certificate of Analysis

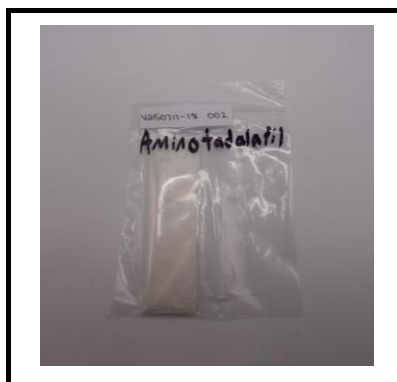
Aminotadalafil Bulk Powder

Report To:  
Modern Aminos LLC  
9169 W State St #1451  
Garden City, ID 83714-1733

Compound: Aminotadalafil  
Matrix: Bulk Powder  
Laboratory ID: V250711-18 002  
Date Reported: 7/17/2025



Analysis	Method	Result
Chromatographic Purity	HPLC-UV/VIS	>99.80% ± 0.18%
Identity	HPLC-UV/VIS	Matches Standard




Report By: Dustin Newman, Laboratory Director on 7/17/2025



Approved By: Tori Johnson, Operations Manager on 7/17/2025



Please consult A2LA Certificate #6377.01.01 for a list of accredited tests. Samples were received in acceptable condition. The result(s) in this report relate only to the portion of the sample(s) tested. All analyses were performed consistent with the Vanguard Laboratory Quality Management System. Vanguard Laboratory and its staff did not observe or participate in the sample selection process, and cannot confirm the authenticity of the sample or its representativeness of the associated lot/batch.



Vanguard Laboratory  
2635 Parkmont Ln  
Olympia, Wa 98502  
360-967-7010