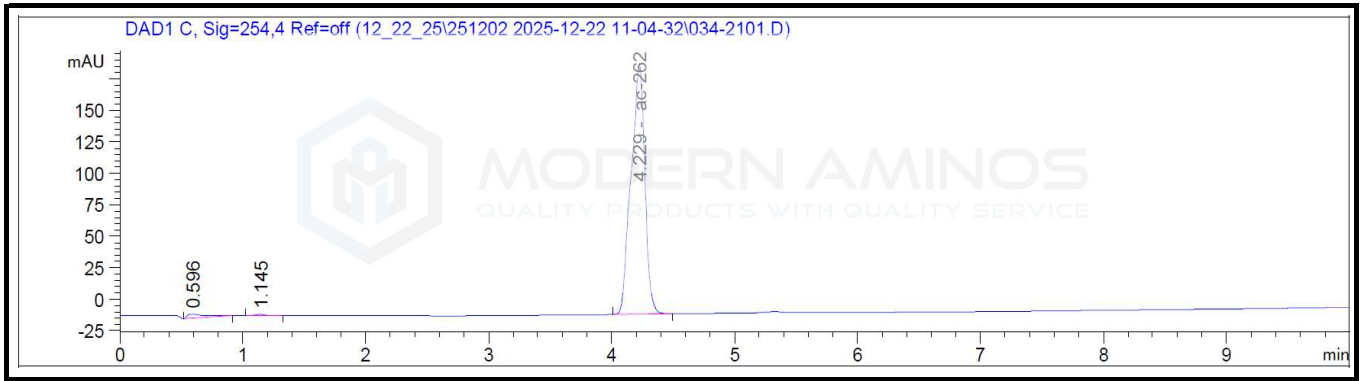


# Certificate of Analysis

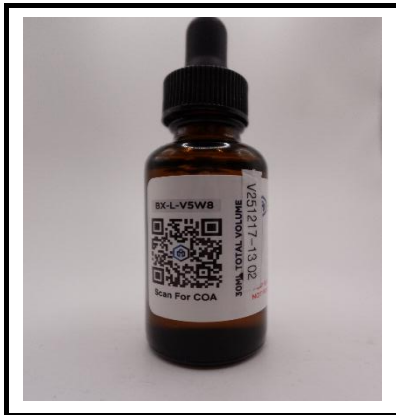
AC-262 30 mg/mL

Report To:  
Modern Aminos LLC  
9169 W State St #1451  
Garden City, ID 83714-1733

Compound: AC-262  
Quantity: 30 mg/mL  
Laboratory ID: V251217-13 002  
Lot Number: BX-L-V5W8  
Date Reported: 12/31/2025



| Analysis | Method      | Results     |
|----------|-------------|-------------|
| Quantity | HPLC-UV/VIS | 28.24 mg/mL |




Report By: Dustin Newman, Laboratory Director on 12/31/2025



Approved By: Tori Johnson, Operations Manager on 12/31/2025



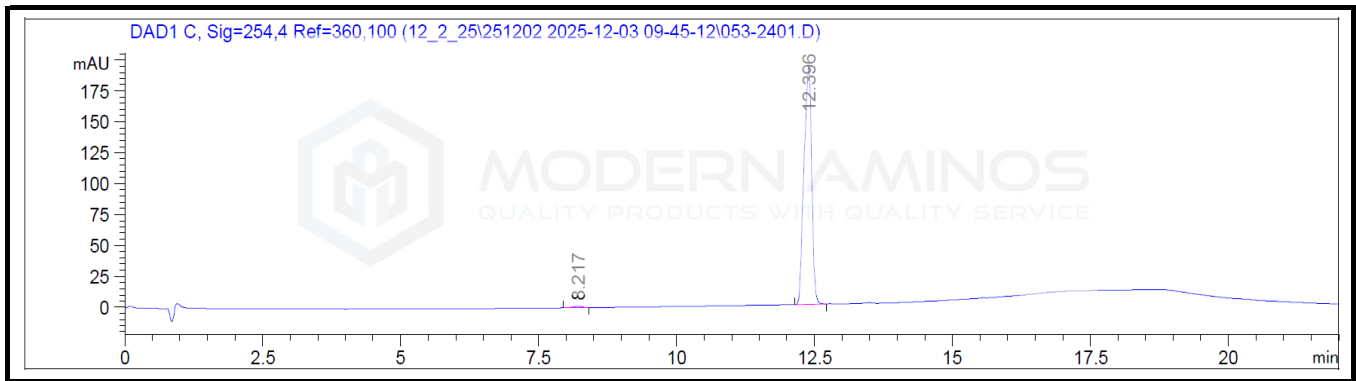
Please consult A2LA Certificate #6377.01.01 for a list of accredited tests. Samples were received in acceptable condition. The result(s) in this report relate only to the portion of the sample(s) tested. All analyses were performed consistent with the Vanguard Laboratory Quality Management System. Vanguard Laboratory and its staff did not observe or participate in the sample selection process, and cannot confirm the authenticity of the sample or its representativeness of the associated lot/batch.

# Certificate of Analysis

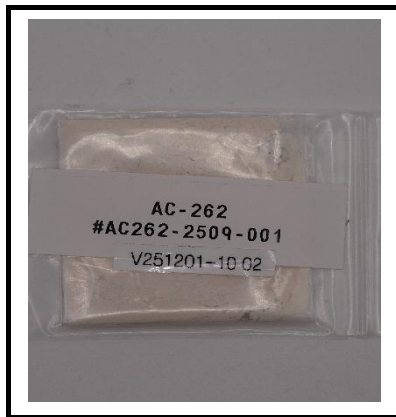
AC-262 Raw Powder

Report To:  
Modern Aminos LLC  
9169 W State St #1451  
Garden City, ID 83714-1733

Compound: AC-262  
Matrix: Raw Powder  
Laboratory ID: V251201-10 002  
Lot Number: AC262-2509-001  
Date Reported: 12/12/2025



| Analysis               | Method      | Results        |
|------------------------|-------------|----------------|
| Chromatographic Purity | HPLC-UV/VIS | 99.30% ± 0.18% |




Report By: Dustin Newman, Laboratory Director on 12/12/2025



Approved By: Tori Johnson, Operations Manager on 12/12/2025



Please consult A2LA Certificate #6377.01.01 for a list of accredited tests. Samples were received in acceptable condition. The result(s) in this report relate only to the portion of the sample(s) tested. All analyses were performed consistent with the Vanguard Laboratory Quality Management System. Vanguard Laboratory and its staff did not observe or participate in the sample selection process, and cannot confirm the authenticity of the sample or its representativeness of the associated lot/batch.



MZ Biolabs  
2102 N Country Club Rd  
Tucson, AZ 85716  
[contact@mzbiolabs.com](mailto:contact@mzbiolabs.com)  
[www.mzbiolabs.com](http://www.mzbiolabs.com)

# Certificate of Analysis

## AC-262 (AC-262536)

4-[(1R,5S)-3-hydroxy-8-azabicyclo[3.2.1]octan-8-yl]naphthalene-1-carbonitrile

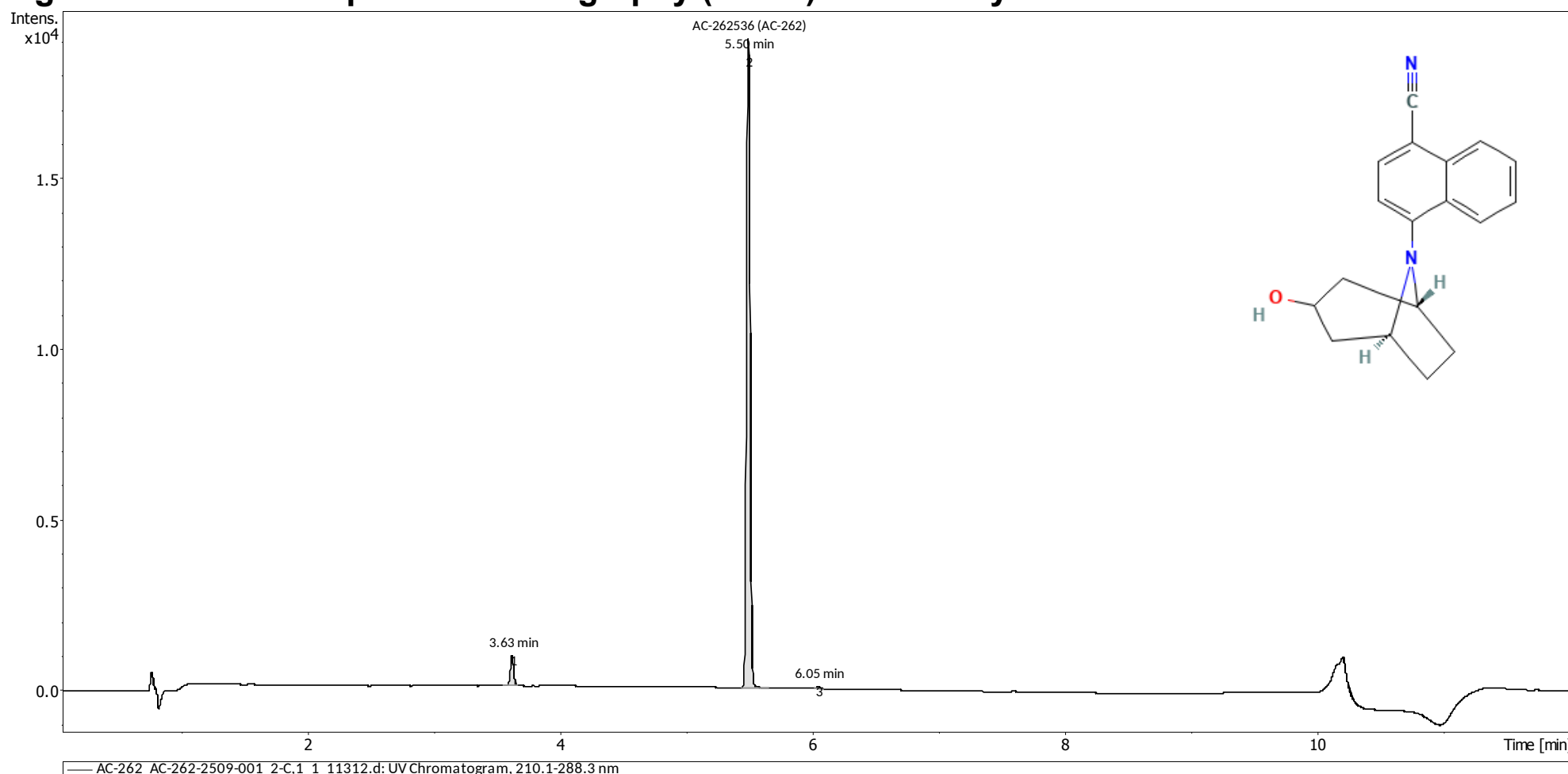
**Compound** : AC-262  
**Lot number** : AC262-2509-001  
**Analysis Date** : 2025-12-15  
**Purity %** : 95.77%  
**Method** : HPLC-UV-MS

**Client** : Modern Aminos  
[www.modernaminos.com](http://www.modernaminos.com)

PubChem CID: 44512434

<https://pubchem.ncbi.nlm.nih.gov/compound/44512434>

### High Performance Liquid Chromatography (HPLC) UV – Purity Test



| PEAK LIST |             | Number of detected peaks: 3 |              |               |
|-----------|-------------|-----------------------------|--------------|---------------|
|           | Time (min)  | Area                        | %Area        |               |
| 1         | 3.63        | 1.59E+03                    | 3.98         |               |
| 2         | <b>5.50</b> | <b>3.83E+04</b>             | <b>95.77</b> | <b>AC-262</b> |
| 3         | 6.05        | 9.79E+01                    | 0.25         |               |

Analysis Performed by  
Ken Pendarvis, ChE  
Analytical Chemist  
MZ Biolabs  
[contact@mzbiolabs.com](mailto:contact@mzbiolabs.com)

2025-12-22



MZ Biolabs  
2102 N Country Club Rd  
Tucson, AZ 85716  
[contact@mzbiolabs.com](mailto:contact@mzbiolabs.com)  
[www.mzbiolabs.com](http://www.mzbiolabs.com)

# AC-262 (AC-262536)

PubChem CID: 44512434

<https://pubchem.ncbi.nlm.nih.gov/compound/44512434>

## Mass Spectrometry (MS) – Identity Test

### Identity confirmed using HPLC-MS

Molecular weight calculated using monoisotopic m/z values from mass spectrum

Expected monoisotopic mass : 278.14 Da

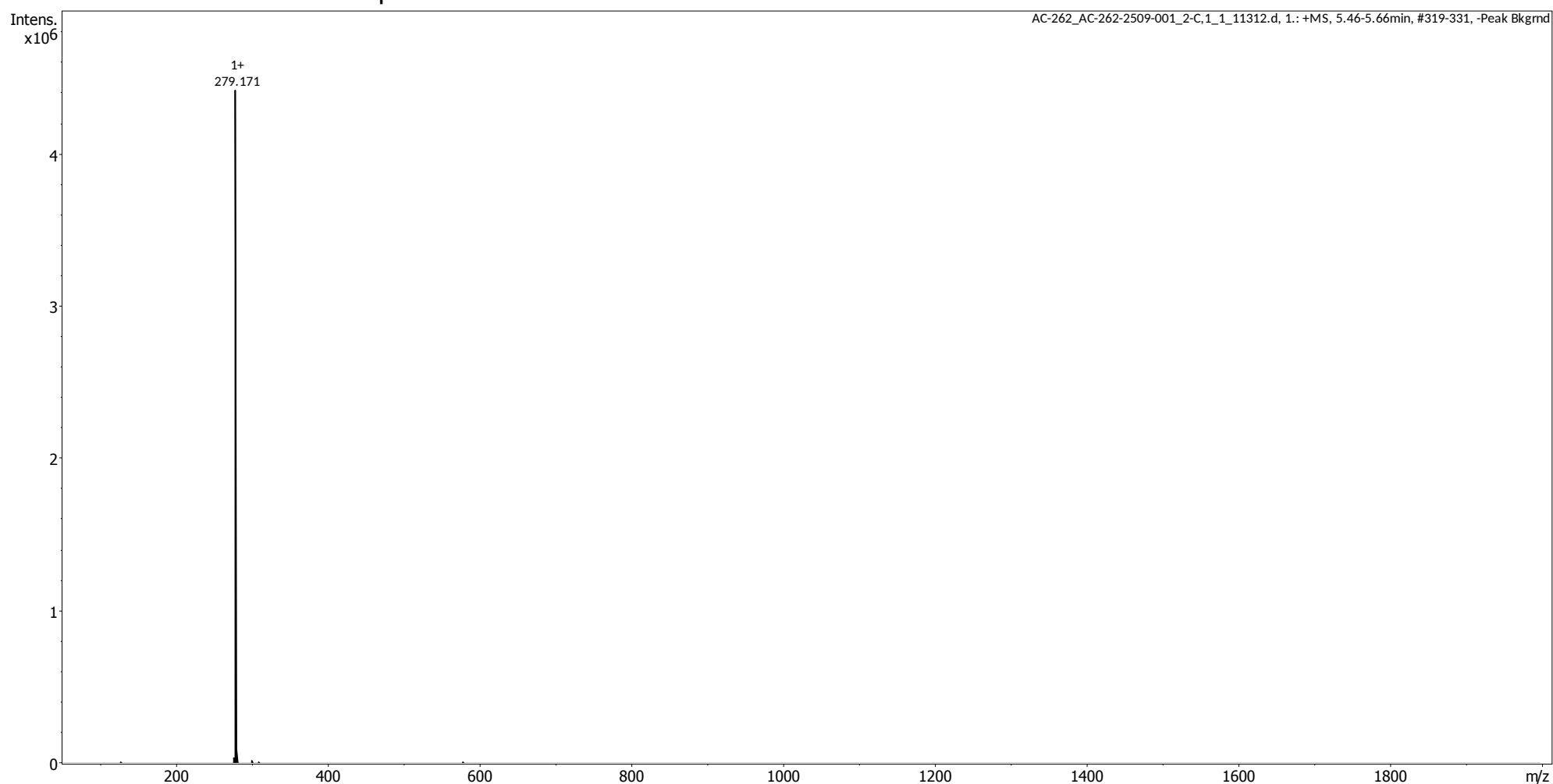
Measured monoisotopic mass : 278.17 Da

**Molecular weight confirmed**

Note : Monoisotopic m/z values are not easily seen in full spectrum view for larger molecules and peptides.

The dominant isotopic peak (base peak) shown in the spectrum below can be used to approximate the average molecular weight frequently reported by vendors and databases as a secondary means of confirmation.

### Recorded MS spectrum



Analysis Performed by  
Ken Pendarvis, ChE  
Analytical Chemist  
MZ Biolabs  
[contact@mzbiolabs.com](mailto:contact@mzbiolabs.com)

2025-12-22